

# Internationaler Nachmittag

## **GAMI** Studentenprogramm

### Abschlussarbeiten und Praktika in China

**Sina Peukert, wbk Institut für Produktionstechnik**  
**30.10.2019**

Global Advanced Manufacturing Institute (GAMI) | Suzhou SILU Production Engineering Services Co., Ltd.

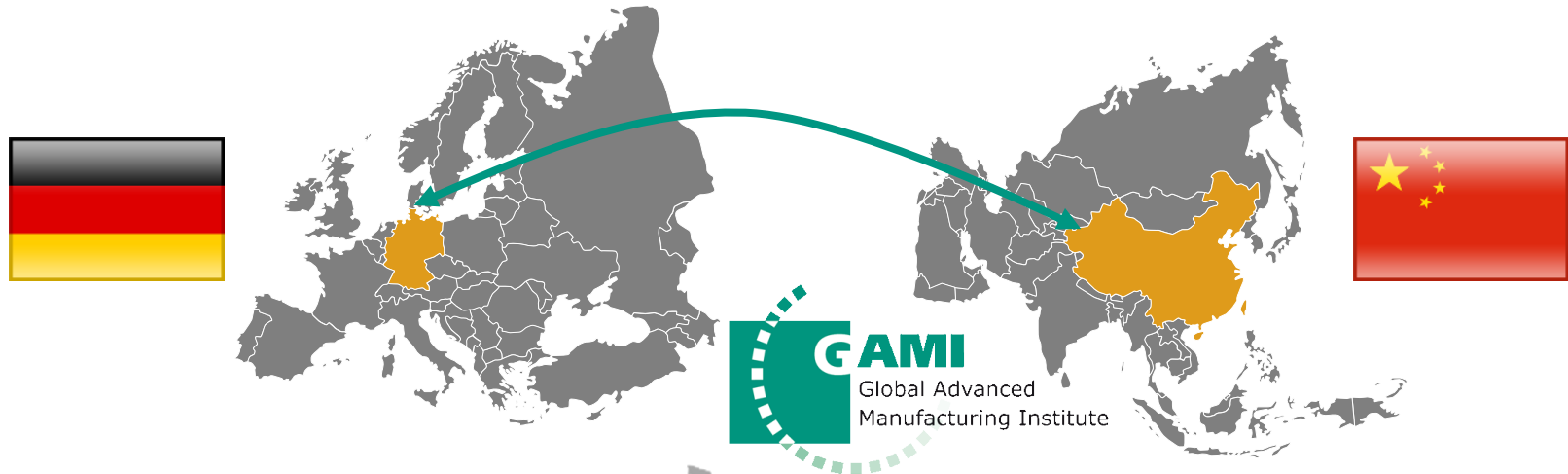


# Agenda

- 1 Introduction of GAMI Study Program**
- 2 GAMI Global Advanced Manufacturing Institute**
- 3 Impressions of our GAMI Institute and of Suzhou**
- 4 Next Steps**

# Application for WS 20/21 at **GAMI** until Jan. 31<sup>st</sup>, 2020

## Sign in now - We are happy to receive your application!



+International projects

Industry projects with partners in China

+Professional development

Insights to new systems, trends  
and technologies

+New insights into a  
foreign culture

Unique cultural exchange

+New experience

Work in a global network

6 months  
Bachelor/Master thesis  
Internship

### Topics:

Sourcing &  
Localization

Supplier  
Development

Quality  
Management

Production  
Management

Logistics  
Management

**Smart Manufacturing and Industry 4.0**

**14.0 Demonstration and Innovation Center (IC) Artificial Intelligence Innovation Factory (AIIF)**

# Semester abroad in China

**Place: Suzhou, Jiangsu**

start:  
SS (04-09)  
WS (10-03)



duration:  
6 months  
(max. 180 days)



during your  
study at KIT



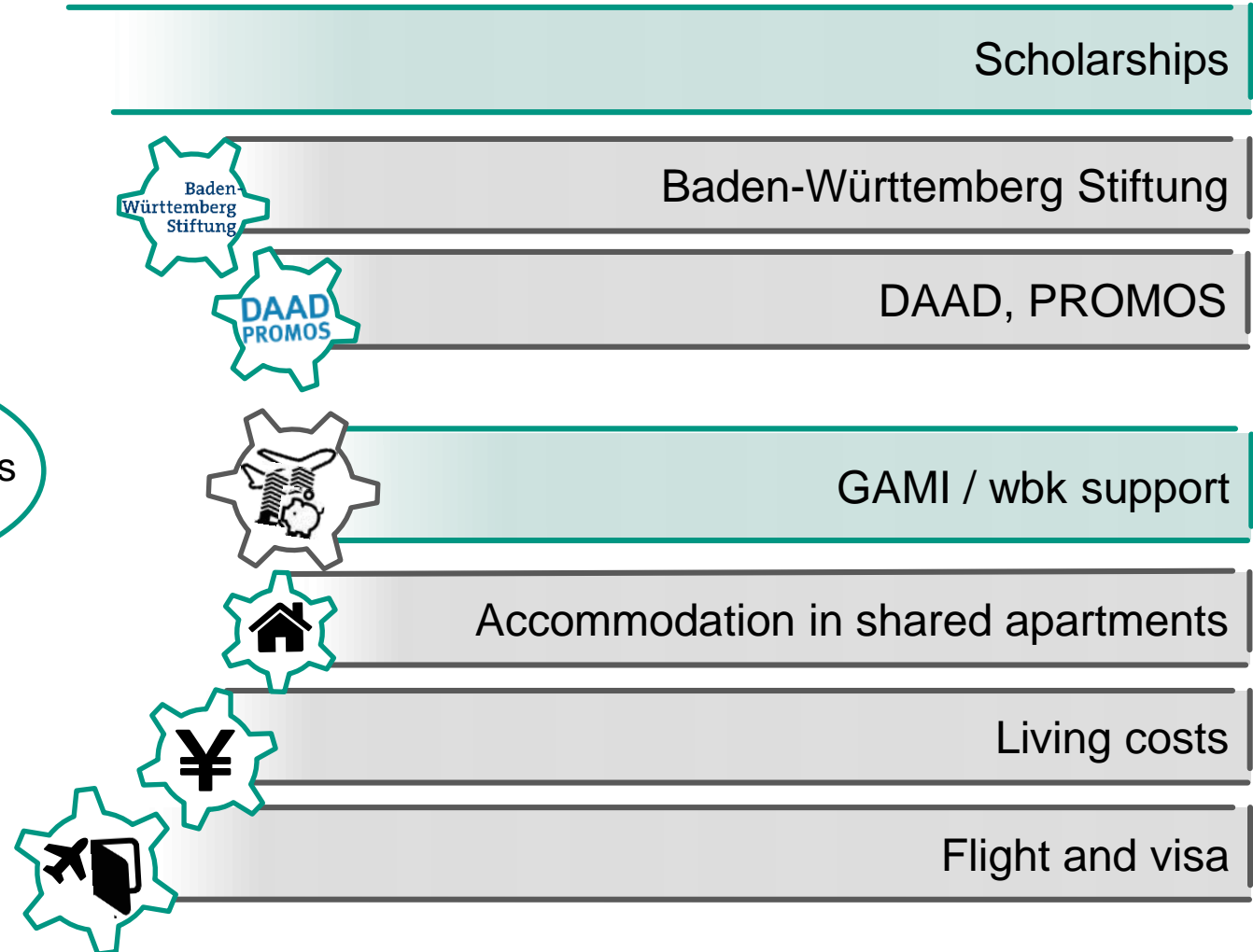
Quelle: <http://images.google.de/imgres?imgurl=http%3A%2F%2Fwww.stepmap.de%2Flandkarte%2Fdeutschland-china-193833.png&imgrefurl=http%3A%2F%2Fwww.stepmap.de%2Flandkarte%2Fdeutschland-china-193833&h=427&w=640&tbnid=RLb-VKmTP1stKM%3A&docid=1HT71kEY53-lxM&ei=EY4AWJLRLMKEgAbpqqWYDQ&tbm=isch&iact=rc&uact=3&dur=987&page=0&start=0&ndsp=10&ved=0ahUKEwjSnbi-59nPAhVCAsAKHWIVCdMQMwguKAQwBA&bih=635&biw=1366> (14.10.2016)

# Semester abroad in China

## Financial and Organizational Support



6 months  
Bachelor/Master thesis  
Internship

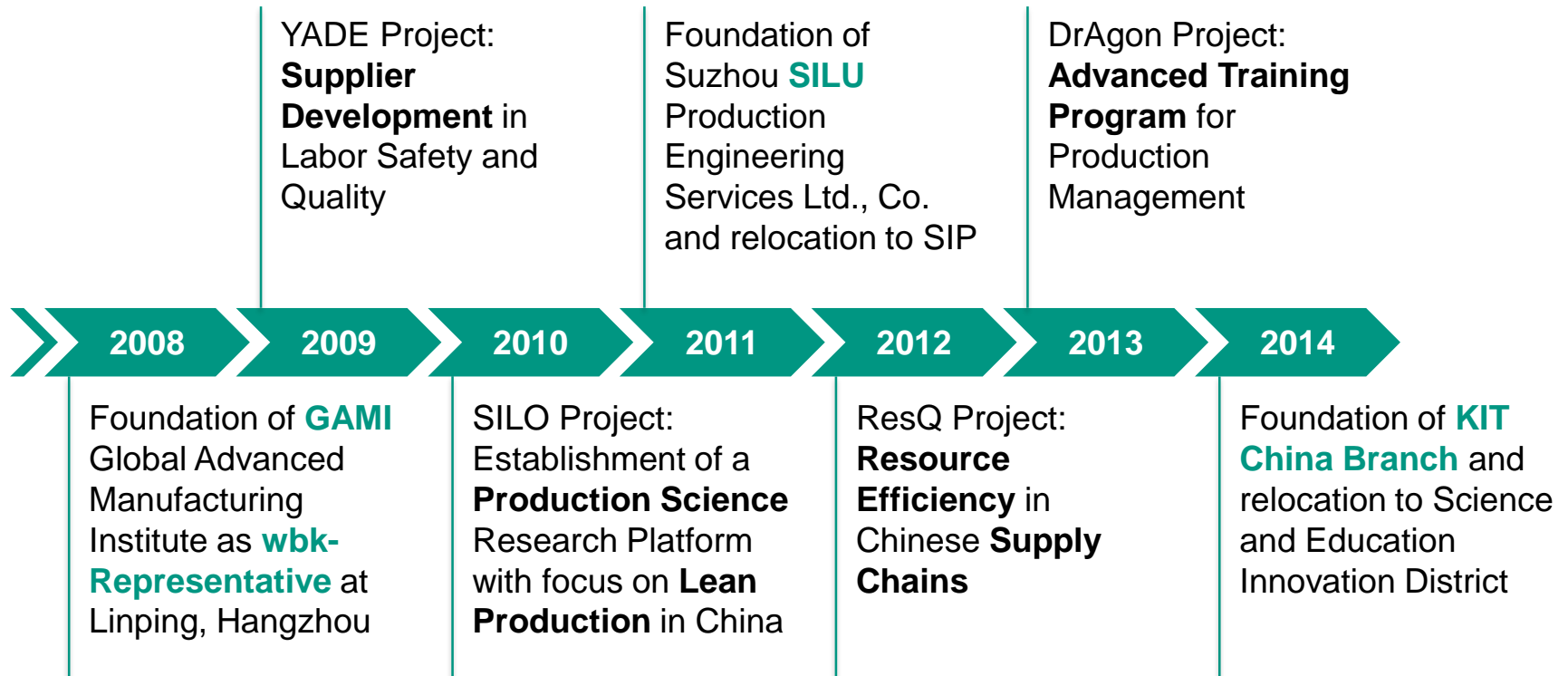


# Agenda

- 1 Introduction of GAMI Study Program
- 2 **GAMI Global Advanced Manufacturing Institute**
- 3 Impressions of our GAMI Institute and of Suzhou
- 4 Next Steps

# History of GAMI

## Project business in China since 2005



GAMI has many years of project experience in China.



# History of GAMI

## Project business in China since 2005

Opening of **Industry 4.0 Demonstration and Innovation Center** and  
SUSTAIN Project:  
**Corporate Social Responsibility**

ProTalent Project:  
Industry 4.0  
Education Program  
for Local Talents

2015

2016

2017

2018

SPPC Project: **Lean Production** and  
**Smart Manufacturing**

Opening of  
**Artificial Intelligence Innovation Factory**



GAMI has many years of project experience in China.



# Location and Facts 2019

## GAMI - Global Advanced Manufacturing Institute

### Employees:

■ Engineers	~15
■ Administration	~4
■ Students	~5

### Education/Trainings:

- 30 Trainings
- 55 Workshops
- 3 University Lectures

### Projects:

- 3 Applied Research Projects
- 31 Industry Projects



# GAMI Research Fields

Being a knowledge leader in smart and global manufacturing

## Smart Manufacturing

- Evaluation and integration strategies
- Implementation road-map for companies



## Innovation Platform

- Developing and testing environment for start-ups
- Open platform for different technologies



**KIT China Branch**



## Sino-German Research

- Joint Industry 4.0 Factory Automation Platform
- Integration of related disciplines



## Technology Transfer & Industrialization

- KIT Innovation Days
- Sino-German entrepreneur networks

## Sponsors



Federal Ministry  
of Education  
and Research



Baden-Württemberg  
MINISTERIUM FÜR WISSENSCHAFT,  
FORSCHUNG UND KUNST



中华人民共和国科学技术部  
Ministry of Science and Technology of the People's Republic of China



江苏省发展和改革委员会  
JIANGSU DEVELOPMENT & REFORM COMMISSION



## Strategic Partners



TONGJI UNIVERSITY Tsinghua University



Karlsruhe Institute of Technology



CLHK 中德学院  
CHINESISCH-DEUTSCHES  
HOCHSCHULKOLLEG



The research background of GAMI enables the development of innovative solutions.

# GAMI Engineering Services

## Cooperation Partners

Sourcing and  
Localization

Supplier  
Development

Quality  
Management

Production  
Management

Logistics  
Management



GAMI relies on strong partnerships with international companies.

# GAMI Training Programs

## Developing high quality people and organizations

### Open Courses

- **State of the art** training materials
- Integration of **real project examples**
- Games in **realistic environment**



*More than 500 trained days every year since 2011*

### In-house Trainings

- **Customized** training content to meet specific requirements
- Integration of **local practices**
- **Case Studies** in on-site production system



*More than 30 days in-house Trainings every year since 2011*

### Manufacturing Workshops

- **Customized** training content to meet specific requirements
- ½ Training + ½ **On-site Improvement**
- Embedded in **project work**



*More than 50 manufacturing workshops every year since 2011*

+ University programs at KIT Hector School (Quality and Supplier Management) and IBSS of Xian Jiaotong Liverpool University (Global Production)

 Combined educational approach (project work and training) is one of GAMI's strengths.



# Industry 4.0 Demonstration and Innovation Center

## Application-oriented Trainings, Consulting and Research



# Artificial Intelligence Innovation Factory

## Application-oriented Trainings, Consulting and Research



# Agenda

- 1** Introduction of GAMI Study Program
- 2** GAMI Global Advanced Manufacturing Institute
- 3** Impressions of our GAMI Institute and of Suzhou
- 4** Next Steps



# GAMI – Global Advanced Manufacturing Institute



# GAMI – Global Advanced Manufacturing Institute



GAMI, Raum 1101, Gebäude A,  
Wisdom Center



“Industry 4.0 Demonstration and  
Innovation Center”



# Impressions of GAMI



# Impressions of SIP

## Public Sharing Facilities

Library



Sports Center



Theater and Cinema



HR Market



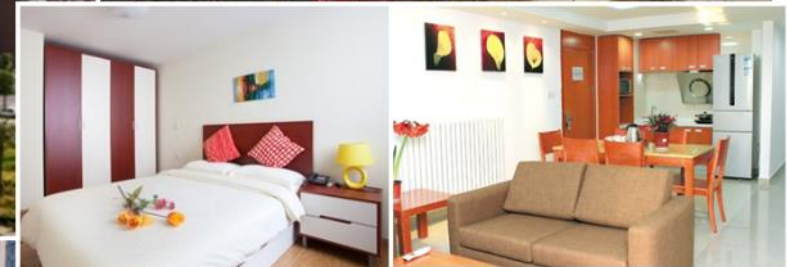
Church





# Impressions of SIP

## Student Dormitory and Transportation



# Impressions of SIP

## Sightseeing

„Gate of the Orient“



„Ligongdi“



„Old City“



„Tiger Hill“



Quelle: [http://images.adsttc.com/media/images/55e8/9df6/6c9d/b5c9/b200/00d4/large\\_jpg/image-suzhou-new-cbd-swa-low-res-9-2011.jpg?1441308143](http://images.adsttc.com/media/images/55e8/9df6/6c9d/b5c9/b200/00d4/large_jpg/image-suzhou-new-cbd-swa-low-res-9-2011.jpg?1441308143) (14.10.2016)

# Agenda

- 1** Introduction of GAMI Study Program
- 2** GAMI Global Advanced Manufacturing Institute
- 3** Impressions of our GAMI Institute and of Suzhou
- 4** Next Steps



# Next Step

## GAMI

- All students of KIT with subject mechanical engineering and industrial engineering as well as informatics
- 6 months at GAMI
- Further information: [www.wbk.kit.edu](http://www.wbk.kit.edu) or [www.silu.asia](http://www.silu.asia)
  
- Documents for application in German or English:
  - Letter of motivation
  - CV with photo
  - Current performance record
  - Certificates (bachelor, internships, etc.)
  
- **contact: [shun.yang@kit.edu](mailto:shun.yang@kit.edu)**

# Thank you for your attention!

**Sina Peukert**

Research Associate

Kaiserstr. 12, 76131 Karlsruhe

Tel.: +49 1523 9502581

sina.peukert@kit.edu

www.wbk.kit.edu

**Shun YANG**

Research Associate

Kaiserstr. 12, 76131 Karlsruhe

Tel.: +49 1523 9502632

shun.yang@kit.edu

www.wbk.kit.edu